

1 Important Information

This guide provides basic installation instructions for Intellian Maritime Mount Adapter Kit. The detailed installation and operation user guide can be readily accessible on our website and at our Partner Portal at [intelliantech.com/en/partners/](https://go.intelliantech.com/en/partners/). If you need any assistance, please contact Intellian Technical Support (support@intelliantech.com).



2 Planning Installation

2.1 Downloading Mobile Application

A mobile app for step-by-step installation, troubleshooting, and monitoring is available on the Google Play and Apple App store via a customer link:



2.2 Antenna Mounting Requirements

You need to procure or fabricate a suitable mount to support the Compact UT.

The mounting platform should be rigid and secured tightly to the structure of the vessel for the maritime environment. Also, it should not be subjected to excessive vibration (ETS 300 019) 2–8 Hz frequency, 7.5 mm sine level; 8–500 Hz frequency, 2 G sine level) to ensure full antenna performance and prevention of potential mechanical damage.

Consider the following factors when selecting the mounting method:

- Confirm the physical size and weight

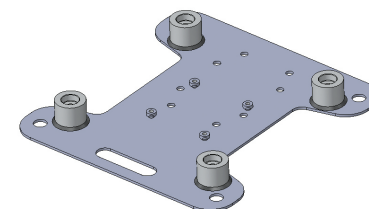
Model Type	Size	Weight
OW10Hx	56 cm x 45 cm x 12 cm (22 in x 17.7 in x 4.7 in)	12.2 kg (26.9 lbs)
OW11Fx	97cm x 50 cm x 13 cm (38.3 in 19.9 in x 5.2 in)	20.5 kg (45.2 lb)

- The chosen mounting method shall withstand wind loads and ensuring the safety of people and property.

**WARNING**  
Do not place the antenna directly next to any radar systems. Precautions must be taken to ensure the placement of the Flat Panel User Terminal is at least 3 [m] below the radar and at an angle of no less than 22° from the radar pointing direction. Failure to follow these guidelines may cause damage to the User Terminal.

2.3 Using Maritime Mount Adapter

It is strongly recommended as an additional accessory. Intellian offers the Maritime Mount Adapter (OW-6019\_A) for the maritime environment to mount the antenna.



Maritime Mount Adapter

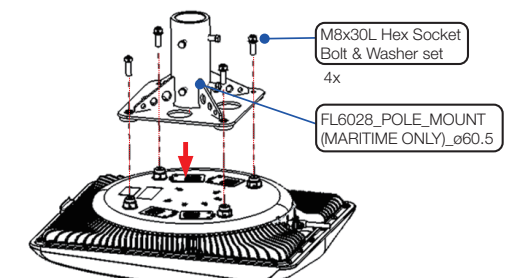
Eutelsat OneWeb LEO User Terminal

Quick Installation Guide

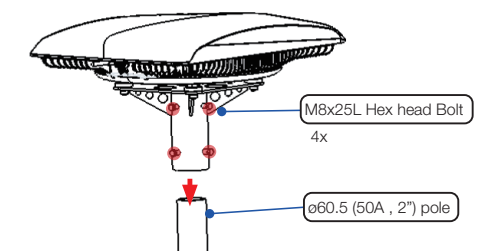
3 Installing OW10HM Maritime UT

3.1 Attaching to Maritime Pole Mount Adapter

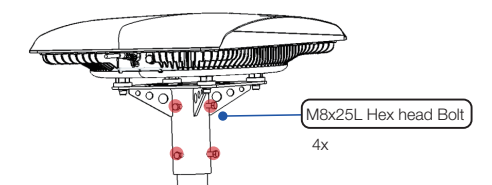
1. For the maritime pole mount install, ensure that the 60mm pole is used for the installation. Prior to the install, prepare all relevant bolts and washers included in the (OW-6034) package.
2. Prepare the ODU and turn the antenna upside down and align the Maritime Pole Mount Adapter with the 4 mounting points
3. Fixate the maritime pole mount adapter and the ODU using the M8x30L hex socket bolts & washer set (4 ea).



4. Once ODU and the pole mount is secured, assemble it onto the 60mm pole and push in to the end of the adapter hole.

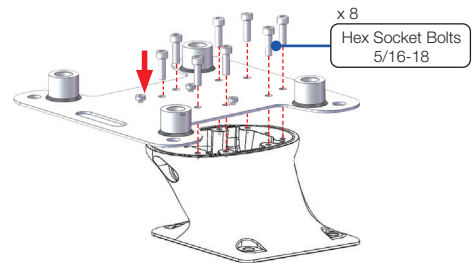


5. Secure the pole and the pole adapter using M8x25 hex socket bolts (4ea). Tighten the four bolts to securely push the pole surface back with inner pole mount surface.

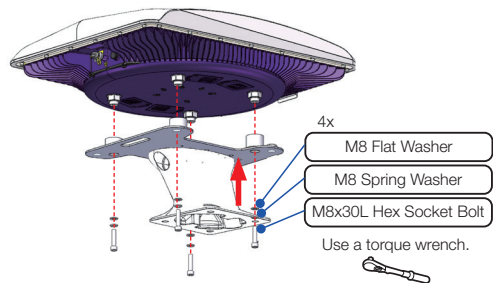


3.3 Attaching Antenna to a Pedestal

- 1. Align the Maritime Mount Adapter Plate with the pedestal holes.
- 2. Apply Loctite #242 to the 5/16-18 bolts (8 ea), insert them from above the adapter plate, and hand-tighten.
- 3. Fully tighten the bolts using a 6 mm (0.25") hex key.



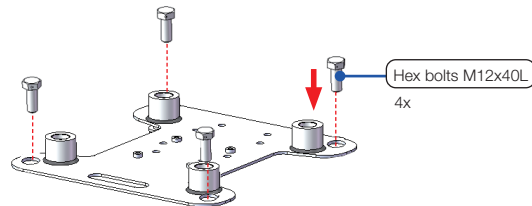
- 4. Attach the antenna to the Maritime Mount Adapter using M8x30L bolts (4 ea) and washers, ensuring not to block the fans, and hand-tighten.



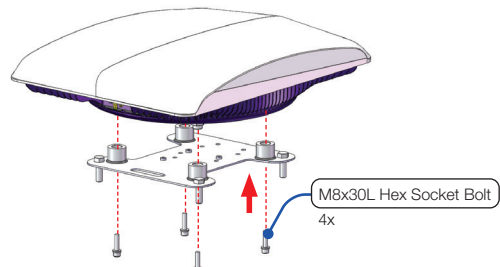
- 5. Fully tighten all bolts using a torque wrench.

3.4 Attaching Antenna to a Mast

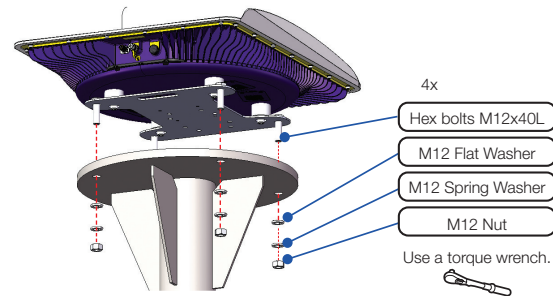
- 1. Gather the M12x40L bolts (4 ea), M8x30L bolts (4 ea), washers, and spring washers from the Maritime Mount Adapter Kit.
- 2. Apply Loctite #242 to all bolt threads before installation.
- 3. Insert M12x40L bolts (4 ea) into the corner holes of the Maritime Mount Adapter Plate and secure temporarily with tape.



- 4. Attach the antenna to the adapter using M8x30L bolts (4 ea) and washers, ensuring not to block the fans, and hand-tighten.



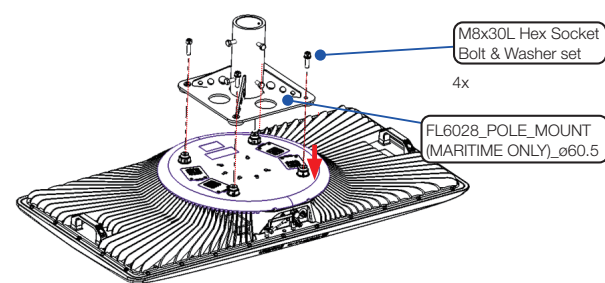
- 5. Fully tighten the M8 bolts using a torque wrench.
- 6. Align the M12x40L bolts with the mast plate holes, secure with washers and nuts, and fully tighten using a torque wrench.



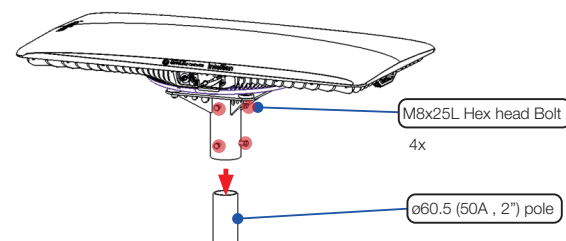
4 Installing OW11FM Maritime UT

4.1 Attaching to Maritime Pole Mount Adapter

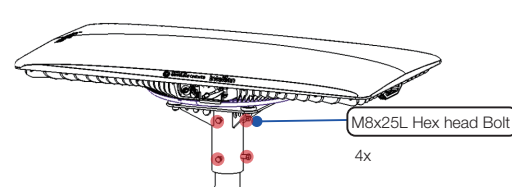
- 1. For the maritime pole mount install, ensure that the 60mm pole is used for the installation. Prior to the install, prepare all relevant bolts and washers included in the (OW-6034) package.
- 2. Prepare the ODU and turn the antenna upside down and align the Maritime Pole Mount Adapter with the 4 mounting points
- 3. Fixate the maritime pole mount adapter and the ODU using the M8x30L hex socket bolts & washer set (4 ea).



- 4. Once ODU and the pole mount is secured, assemble it onto the 60mm pole and push in to the end of the adapter hole.

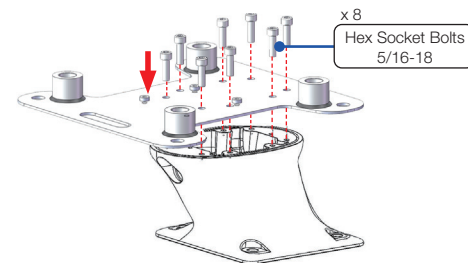


- 5. Secure the pole and the pole adapter using M8x25 hex socket bolts (4ea). Tighten the four bolts to securely push the pole surface back with inner pole mount surface.

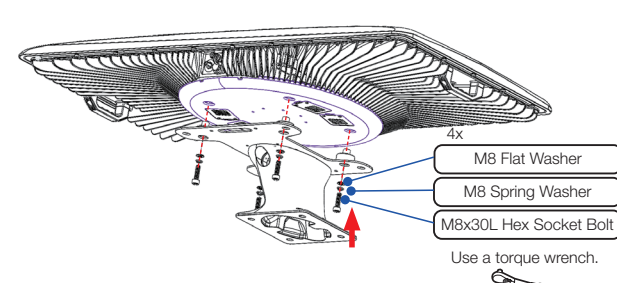


4.2 Attaching Antenna to a Pedestal

- 1. Align the Maritime Mount Adapter Plate with the pedestal holes.
- 2. Apply Loctite #242 to the 5/16-18 bolts (8 ea), insert them from above the adapter plate, and hand-tighten.
- 3. Fully tighten the bolts using a 6 mm (0.25") hex key.



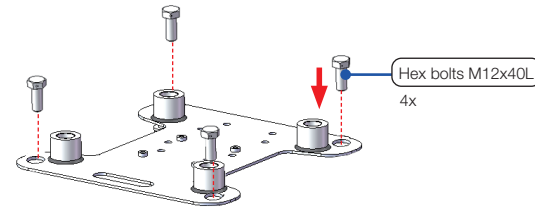
- 4. Attach the antenna to the Maritime Mount Adapter using M8x30L bolts (4 ea) and washers, ensuring not to block the fans, and hand-tighten.



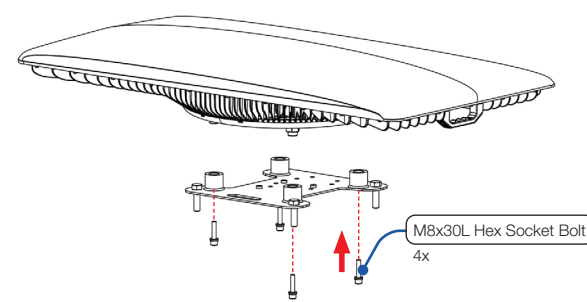
- 5. Fully tighten all bolts using a torque wrench.

4.3 Attaching Antenna to a Mast

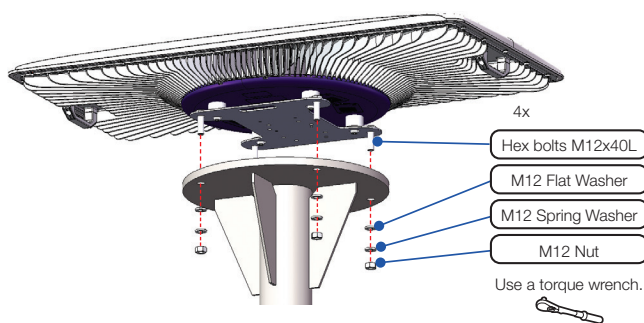
- 1. Gather the M12x40L bolts (4 ea), M8x30L bolts (4 ea), washers, and spring washers from the Maritime Mount Adapter Kit.
- 2. Apply Loctite #242 to all bolt threads before installation.
- 3. Insert M12x40L bolts (4 ea) into the corner holes of the Maritime Mount Adapter Plate and secure temporarily with tape.



- 4. Attach the antenna to the adapter using M8x30L bolts (4 ea) and washers, ensuring not to block the fans, and hand-tighten.



- 5. Fully tighten the M8 bolts using a torque wrench.
- 6. Align the M12x40L bolts with the mast plate holes, secure with washers and nuts, and fully tighten using a torque wrench.



**NOTE**  
Add washers between the adapter plate and mast if leveling is required.